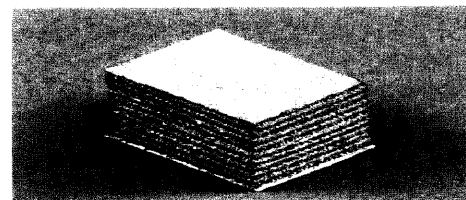
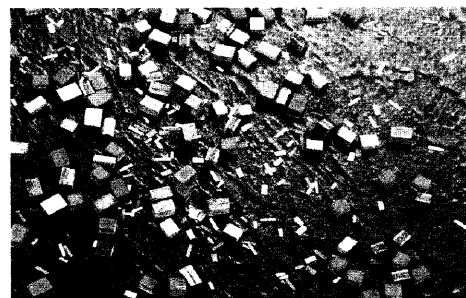


Glossary

SMT gasket is mounted on the circuit pattern or ground pattern on the PCB Board by SMT process.
 SMT gasket's inherent elastic & electrical property provides exceptional electrical grounding & contacts, reliable cushioning.
 SMT gasket is effectively replaceable for conventional EMI gasket, finger stock, foam-in-place gasket.
 In addition, it gives production reliability, fast process, cost saving through automatic assembly.



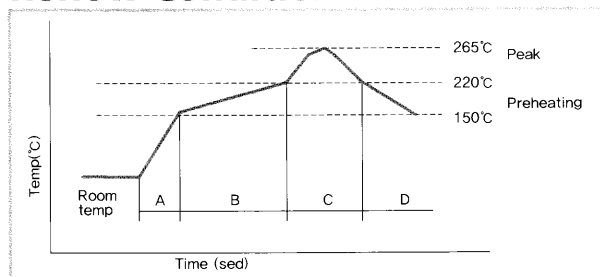
Merit

- Superior elastic restoration and Conductivity.
- Various dimensions and Re-Work available.
- Strong adhesion & good elastic property.
- Less in-put cost & high production yield.
- Ideal solution for mass production.

Part No.	Width (W)	Height (H)	Length (L)	Carrier type(W)/Pitch	RKT /	Part No.	Width (W)	Height (H)	Length (L)	Carrier type(W)/Pitch	RKT / REEL
PSG-0.8-0.5-7.5	0.8	0.5	7.5	16/4	15,250	SG-1.25-0.65-8.0	1.25	0.65	8.0	16/4	15,250
SG-0.9-0.45-5.5	0.9	0.45	5.5	12/4	15,250	SG-1.25-0.8-3.2	1.25	0.8	3.2	12/4	14,250
SG-0.9-0.45-8	0.9	0.45	8.0	16/4	15,250	SG-1.25-0.8-5.5	1.25	0.8	5.5	12/4	14,250
SG-1.0-0.75-5.5	1.0	0.75	5.5	12/4	15,250	SG-1.25-1.0-2.0	1.25	1.0	2.0	12/4	12,250
SG-1.1-0.45-5.5	1.1	0.45	5.5	12/4	15,250	SG-1.5-0.5-1.5	1.5	0.5	1.5	12/4	15,250
SG-1.1-0.45-8.0	1.1	0.45	8.0	16/4	15,250	SG-1.5-1.0-1.5	1.5	1.0	1.5	12/4	12,250
SG-1.1-0.65-2.0	1.1	0.65	2.0	12/4	15,250	SG-1.5-1.5-1.5	1.5	1.5	1.5	12/4	9,250
SG-1.1-0.65-3.2	1.1	0.65	3.2	12/4	15,250	SG-1.6-0.5-3.2	1.6	0.5	3.2	12/4	12,250
SG-1.1-0.65-5.5	1.1	0.65	5.5	12/4	15,250	SG-1.6-1.7-3.6	1.6	1.7	3.6	12/4	8,250
SG-1.1-0.65-8.0	1.1	0.65	8.0	16/4	15,250	SG-1.7-1.6-3.6	1.7	1.6	3.6	12/4	8,250
SG-1.1-0.75-5.5	1.1	0.75	5.5	12/4	15,250	SG-2.0-0.65-5.5	2.0	0.65	5.5	12/4	15,250
SG-1.25-0.45-5.5	1.25	0.45	5.5	12/4	15,250	SG-2.0-0.65-8.0	2.0	0.65	8.0	16/4	15,250
SG-1.25-0.45-8.0	1.25	0.45	8.0	16/4	15,250	SG-2.0-0.65-12.0	2.0	0.65	12.0	24/4	15,250
SG-1.25-0.65-5.5	1.25	0.65	5.5	12/4	15,250	SG-2.0-1.0-2.0	2.0	1.0	2.0	12/4	12,250
Part No.	Width (W)	Height (H)	Length (L)	Carrier type(W)/Pitch	RKT /	Part No.	Width (W)	Height (H)	Length (L)	Carrier type(W)/Pitch	RKT / REEL
SG-2.0-1.3-8.0	2.0	1.3	8.0	16/4	10,250	SG-3.2-1.3-3.2	3.2	1.30	3.2	12/8	5,100
SG-2.0-1.5-1.25	2.0	1.5	1.25	12/4	9,250	SG-3.2-2.0-3.2	3.2	2.0	3.2	12/8	4,100
SG-2.0-1.5-2.0	2.0	1.5	2.0	12/4	9,250	SG-4.0-2.5-6.0	4.0	2.5	6.0	12/8	3,100
SG-2.0-1.5-3.0	2.0	1.5	3.0	12/4	9,250	SG-4.0-2.0-8.0	4.0	2.0	8.0	16/8	4,100
SG-2.0-2.0-2.0	2.0	2.0	2.0	12/4	7,250	SG-4.0-2.7-6.0	4.0	2.7	6.0	16/8	3,100
SG-2.25-2.0-8.0	2.25	2.0	8.0	12/4	7,250	SG-4.0-3.0-6.0	4.0	3.0	6.0	16/8	3,000
SG-2.5-2.4-3.6	2.5	2.4	3.6	16/4	7,250	SG-4.0-3.5-5.0	4.0	3.5	5.0	12/8	2,100
SG-2.5-2.4-8.0	2.5	2.4	8.0	12/8	3,100	SG-4.0-3.5-6.0	4.0	3.5	6.0	16/8	2,100
SG-2.5-2.5-4.0	2.5	2.5	4.0	16/8	3,100	SG-4.0-4.0-5.0	4.0	4.0	5.0	12/8	2,100
SG-2.8-1.75-2.0	2.8	1.75	2.0	12/8	3,100	SG-4.0-4.0-6.0	4.0	4.0	6.0	16/8	2,100
SG-3.0-0.2-3.0	3.0	0.2	3.0	12/8	4,100	SG-4.5-4.5-6.0	4.5	4.5	6.0	16/8	1,600
SG-3.0-2.0-2.0	3.0	2.0	2.0	12/8	7,100	SG-5.0-2.5-6.0	5.0	2.5	6.0	16/8	3,100
SG-3.0-2.5-4.0	3.0	2.5	4.0	12/8	3,100	SG-5.0-3.0-4.0	5.0	3.0	4.0	12/8	3,000
SG-3.0-2.5-5.0	3.0	2.5	5.0	12/8	3,100	SG-5.0-3.2-6.0	5.0	3.2	6.0	16/8	2,900

(Customized dimensions are available)

Reflow Condition



Components size		Reflow Condition	
A	Temp. rise time	40	unit
B	Heating time	80~200	sec
	Heating temperature	150 ~220	°C
	Heating time	80~100	sec
C	peak temperature	265	°C
	Peak Temp. hold time	moment	sec
D	Cooling time	> 60	sec