



# ELPACTO<sup>®</sup> Conductive Fabric

IT Technology metalized conductive fabric combines highly conductive metals with lightweight polyester fabric to meet diverse range of EMI/RFI shielding requirements. We offer a large variety of polyester woven (taffeta), non-woven and mesh shielding conductive fabric with copper, nickel, and copper and nickel-plated.

Conductive fabrics can be applied to a variety of situations where emi/rfi shielding is required including architectural applications such as shield complete rooms, or as the shielding material in EMI gaskets, tapes, and shield laminates, the broadcast and cable industry.

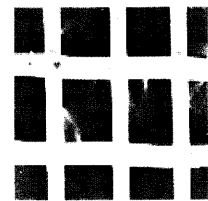
IT Technology conductive fabrics provide superior shielding effectiveness and surface conductivity. In addition, they are easily fabricated into all kinds of shapes and profiles for both architectural and die cut requirements.



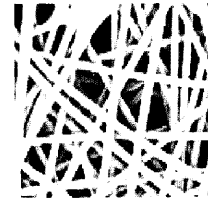
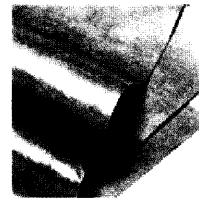
## Types and Properties

Thickness (mm)	Type	Product No
0.035 ± 0.003	Woven / Rip stop	CFSS370CN
0.035 ± 0.003	Non-woven	CFSSNW20CN
0.043 ± 0.001	Woven / Rip stop	CFSWRP370CN
0.050 ± 0.01	D.T.Y	CFWPD300Gold
0.055 ± 0.01	D.T.Y	CFWPD300CN
0.065 ± 0.01	Woven	CFW200CN
0.070 ± 0.01	Mesh(5D)	CFSM130CN
0.070 ± 0.01	Mesh(15D)	CFSM200CN
0.080 ± 0.03	Non-woven	CFNW20CN
0.085 ± 0.01	D.T.Y	CFWD300CN
0.085 ± 0.01	Woven	CFW280CN
0.085 ± 0.01	Mesh(20D)	CFM130CN
0.085 ± 0.01	Mesh(20D)	CFM200CN
0.095 ± 0.01	Mesh(30D)	CFM80CN
0.1 ± 0.01	Woven	CFW290CN
0.1 ± 0.03	Non-woven	CFLDNW20CN
0.1 ± 0.01	Woven / Rip stop	CFWR260CN
0.11 ± 0.01	Woven / Rip stop	CFWR290CN
0.11 ± 0.01	Rip stop D.T.Y	CFWRD270CN
0.13 ± 0.03	Non-woven	CFNW30CN
0.155 ± 0.01	D.T.Y	CFWD260CN
0.18 ± 0.01	D.T.Y	CFWD270CN
0.18 ± 0.01	Woven	CFW130CN
0.19 ± 0.03	Non-woven	CFNW50CN
0.21 ± 0.01	D.T.Y	CFWD320CN
0.25 ± 0.03	Non-woven	CFNW70CN
0.32 ± 0.03	Non-woven	CFNW100CN
0.4 ± 0.03	Non-woven	CFNWK100CN
0.5 ± 0.03	Spun non-woven	CFSPW60CN
0.58 ± 0.01	Mesh type	CFMF200CN

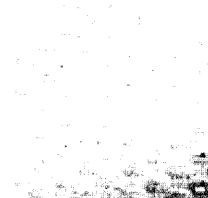
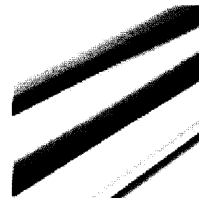
### Mesh



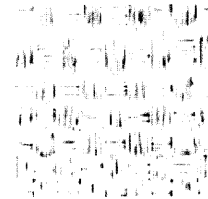
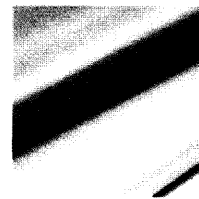
### Non-Woven



### Woven



### Rip-Stop



## Application

- Shield Screen
- Shield Gasket
- Shield Tape
- Tempest Room
- Cable Shield
- Radar Reflection
- ESD Sheet
- Shield Window and etc
- Clothes