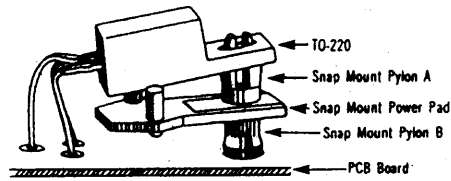
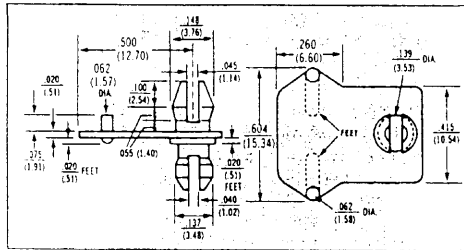


Montageplatte für TO220 Leistungstransistor in Snap-in Power transistor-mounting plate in snap-in EMP-TO220 SI

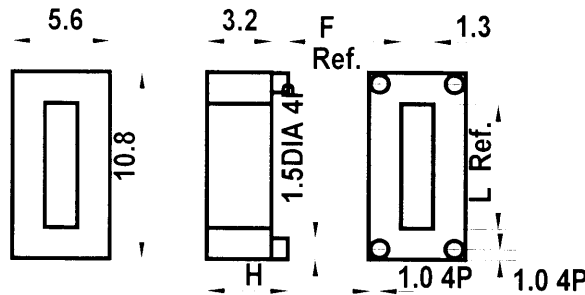
Isoliermontageplatte aus Kunststoff für erhöhte Isolation des Transistors	Isolationmountingplate in plastic for higher isolation of the transistor
-hält den Leistungstransistor ohne Schraube	-mounting of the transistor without any screw
-einfache Montage: Snap in Zapfen „A“ in das Transistor-Montageloch einstecken und Zapfen „B“ in die Leiterplattenbohrung (Ø3,2mm) einschnappen lassen	-simple mounting: snap in pylon „A“ into the mounting hole of the transistor and snap in pylon „B“ in the PCB (with Ø3.2mm hole)

For Low Profile Mounting



Material/Technische Daten:	Material/Technical Data:
glasfaserverstärktes Polyamid	Glassfibre reinforced polyamide
Hitzebeständigkeit: 160°C	Thermal resistance: 160°C
Durchschlagsfestigkeit: 30KV/mm	Breakdown voltage: 30 KV/mm
Farbe: schwarz	Color: schwarz
UL 94V-0	UL 94V-0

Transistorhalter *Transistor mounts* TO-202/TO-220



Type	Ref. H	Ref. F	Ref. L
TEK 2125	3.2	000	7.1
TEK 2150	3.8	0.64	7.1
TEK 2175	4.4	1.3	7.1
TEK 2200	5.1	1.9	7.1
TEK 2275	7.0	3.8	7.1

Material: Nylon 6/6 **Farbe/color:** weiß/white