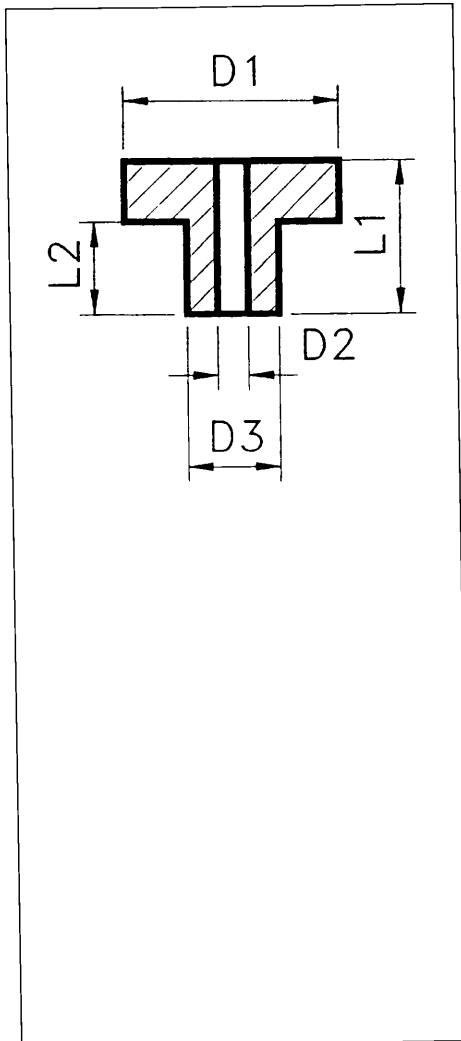


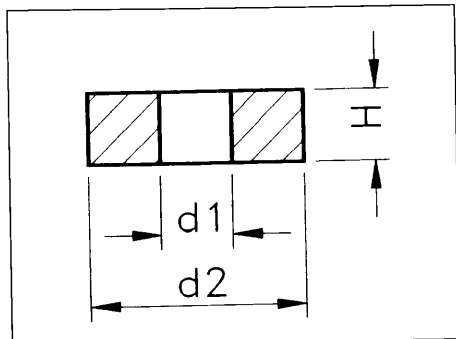


Isolierbuchsen / Insulatin bushes

Material PA: Polyamid 6.6, GV 25%, hitzestabilisiert bis 140 °C, nicht brennend nach UL 94V-O
 Material SR-25: hochwärmefest und formstabil bis 200 °C, nicht brennend nach UL 94V-O
 Material PPS-40: hochwärmefest, formstabil bis 260 °C, nicht brennend nach UL 94V-O
 Material KER221: mindestens bis 800 °C wärmebeständig.

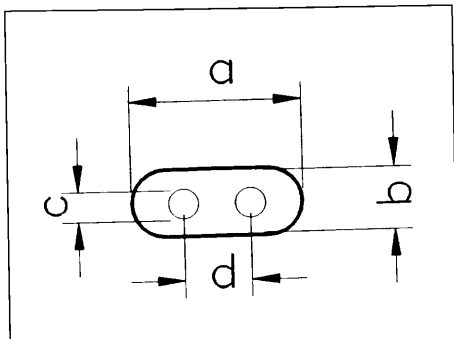


Type	Material	D1	D2	D3	L1	L2	für Gehäuse
IBE 01	SR-25	7.5	3.1	3.9	4.5	3.5	TO-3
IBE 1-1	PA	7.5	3.1	3.9	6.0	4.5	TO-3
IBE 02	SR-25	7.1	3.1	3.8	3.5	2.5	TO-3
IBE 2-1	PA	7.5	3.1	3.5	3.4	2.5	TO-3
IBE 03	SR-25	7.0	3.0	4.0	4.5	3.0	TO-3
IBE 3-1	PA	5.5	3.0	3.5	3.5	2.5	TO-3
IBE 04	SR-25	6.0	3.1	3.5	2.2	1.2	TO-220
IBE 4-1	PA	7.5	3.1	3.5	2.3	1.3	TO-220
IBE 05	SR-25	6.4	3.1	3.8	2.3	1.1	TOP 66, TO-220
IBE 06	SR-25	9.5	4.1	6.4	2.5	1.3	TO-3
IBE 07	SR-25	8.0	2.6	3.0	4.4	2.3	TO-126
IBE 7-1	PA	8.0	2.6	4.8	2.1	1.1	TO-126
IBE 08	SR-25	7.5	3.1	3.6	4.0	3.0	TO-202
IBE 8-1	PA	7.5	3.1	3.5	6.5	2.5	TO-202, TO-3
IBE 09	SR-25	6.9	3.1	4.0	3.4	1.9	SOT-93
IBE 10	SR-25	7.0	3.05	3.95	5.5	3.95	TO-3
IBE 11	SR-25	7.0	3.0	4.0	6.0	4.5	TO-3
IBE 11-1	PA	7.0	3.5	4.9	8.2	7.4	TO-3
IBE 12	SR-25	6.0	3.05	3.55	4.0	3.0	TO-220, TO-202
IBE 12-1	PA	5.0	2.7	3.15	2.4	1.4	TO-126
IBE 14	SR-25	7.0	3.1	3.5	3.5	2.5	TO-220, TOP-66 DO-4
IBE 17	SR-25	9,45	5,0	6,35	3,7	1,2	
T7036P	PPS-40	7.1	3.0	3.7	2.0	0.8	
T7031 P	PPS-40	7.1	2.8	3.8	4.2	3.2	
T7032P	PPS-40	7.1	2.8	3.8	5.8	4.7	
T7035P	PPS-40	7.9	3.7	4.5	5.7	4.5	
T7034P	PPS-40	7.9	3.7	4.8	2.0	0.8	
EBC1613	KER221	7.0	2.5	5.0	6.0	4.0	
EBC3381	KER221	8.3	3.1	5.0	6.0	3.5	
EBC2165	KER221	10.0	2.0	7.0	7.5	5.5	
EBC2209	KER221	10.0	4.2	6.0	6.0	3.5	



Isolerringe aus KER221

Type	d 2	d1	H
EWC 37201	4.9	1.85	3.0
EWC 22280	8.0	3.5	2.0
EWC 00515	8.0	4.35	3.0
EWC 08~10	10.2	6.4	3.3
EWC 21730	12.7	7.1	4.0
EWC 27990	17.0	4.5	4.0



Bauteileabstandshalter aus KER221, hochisolierend

Type	a	b	c	d
EDC 0081	10.9	5.8	2.9	4.8
EDC 2375	9.6	6.0	1.8	5.0
EDC 3570	5.0	3.0	1.5	2.1

Längenabschnitte nach Kundenwunsch